

PRINTER TOOL'S INSTRUCTION

Pinnacle Technology Corp.

CONTENTS

1	Communication Setting	1
1.1	Ethernet/Wireless Printer	1
1.2	Serial Printer	3
1.3	USB Printer.....	4
2	Parameter Setting.....	5
3	Logo Setting	7
4	Other Setting.....	9

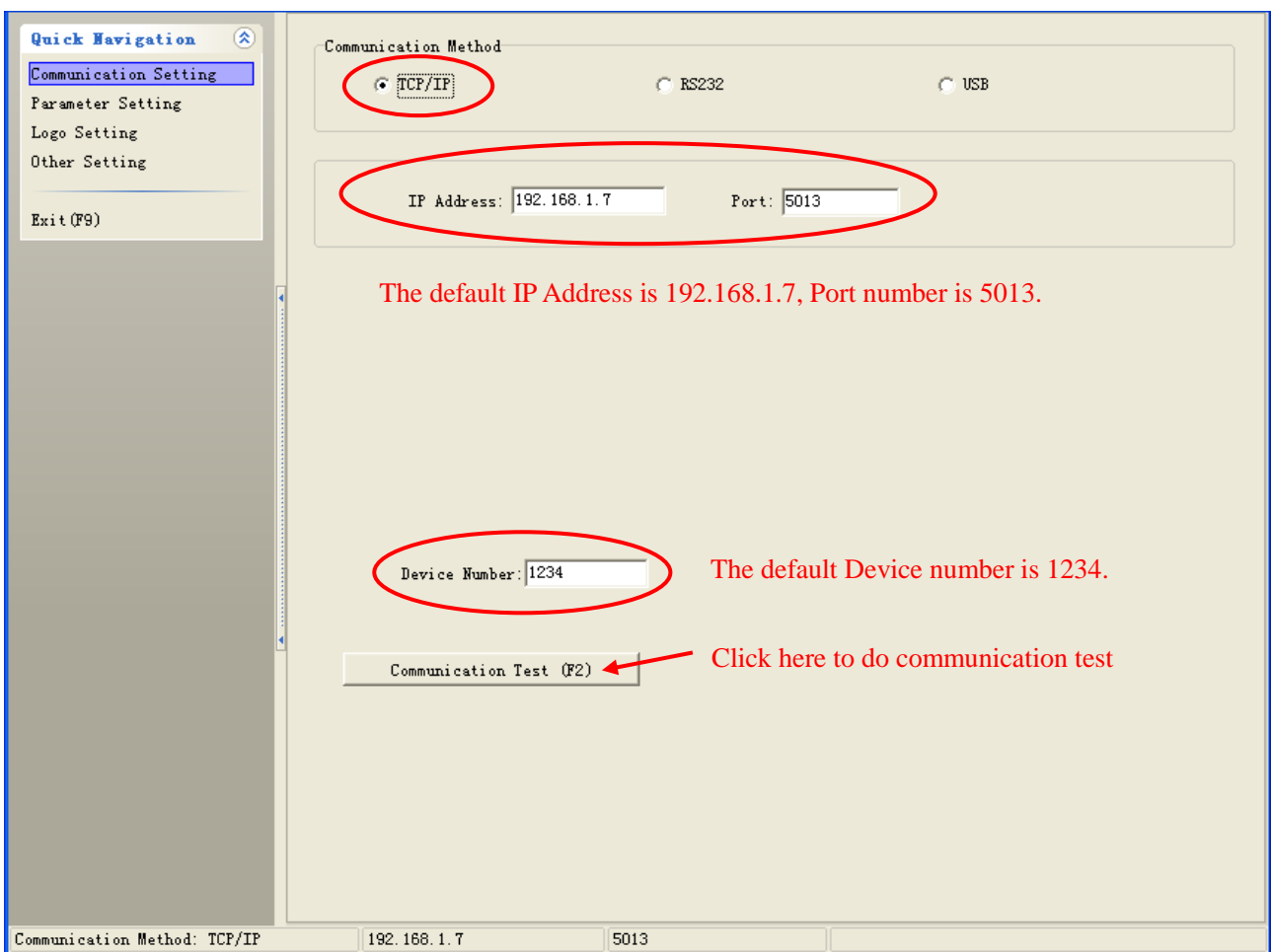
Double click to open 'Printertool.exe'. Here, you can use the software to set printer parameters.

1 Communication Setting

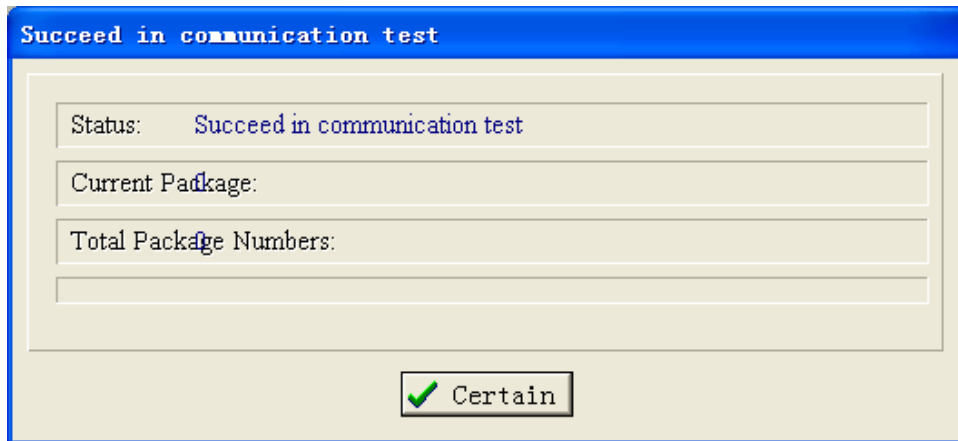
Click "Communication Setting" in the "Quick Navigation" menu. There are three communication methods, Do select the right communication method according to your printer communication interface.

1.1 Ethernet/Wireless Printer

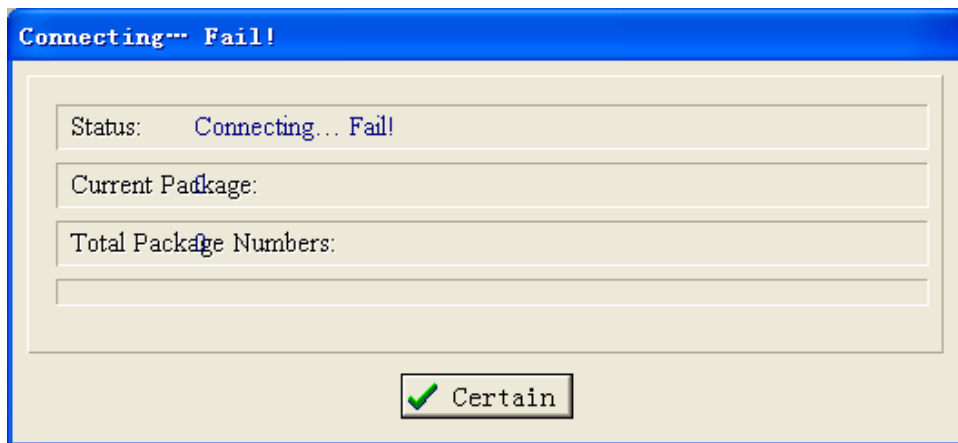
If your printer is Ethernet/Wireless printer, select **TCP/IP** as the following picture.



Click “**Communication Test (F2)**” to test communication. If there are no errors, pop-up window will be shown as follows.

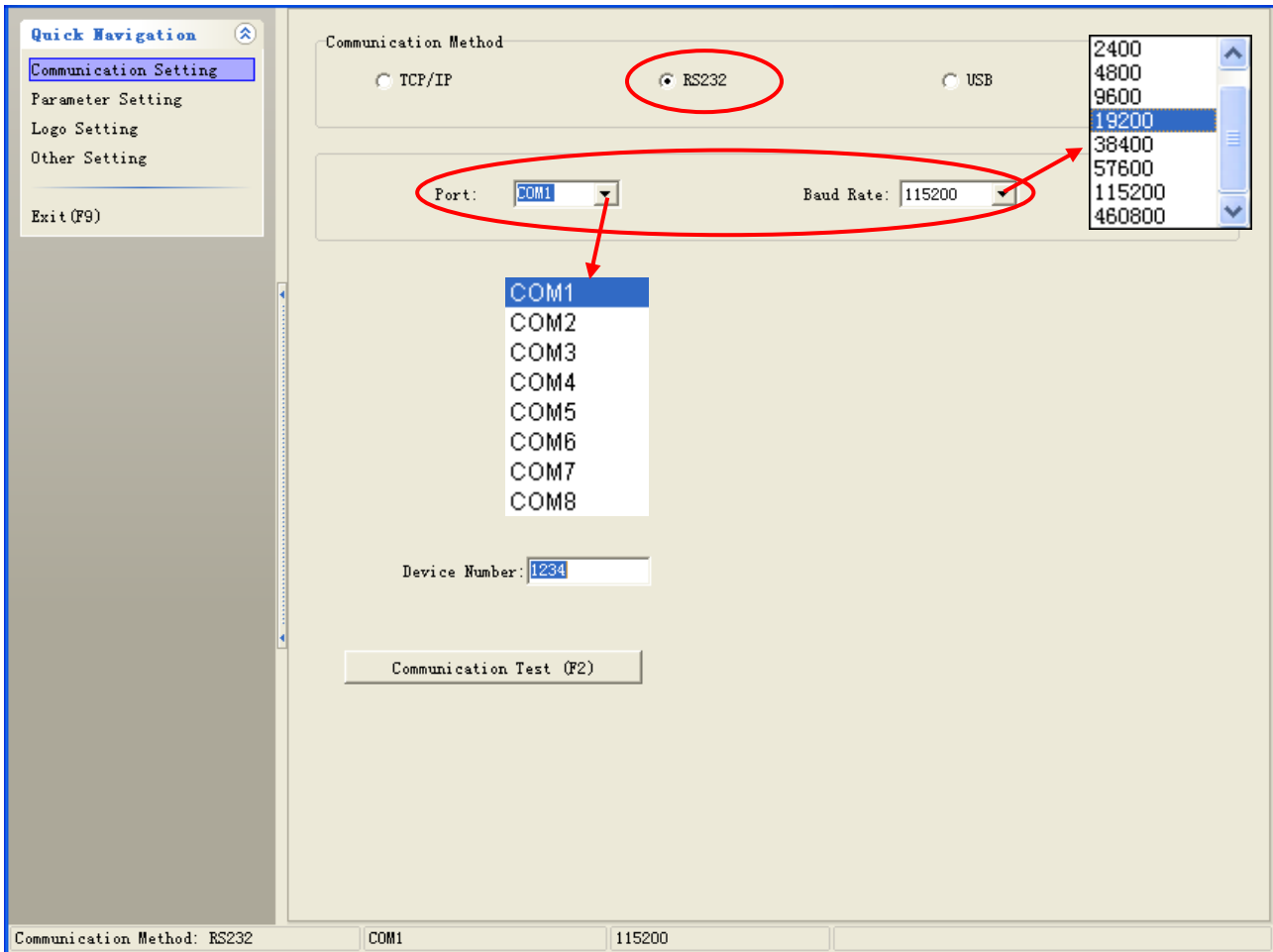


Otherwise, the failure window will be displayed. Users should correct the communication setting until pass the communication test.



1.2 Serial Printer

If your printer is serial printer, select **RS232** as the following picture.

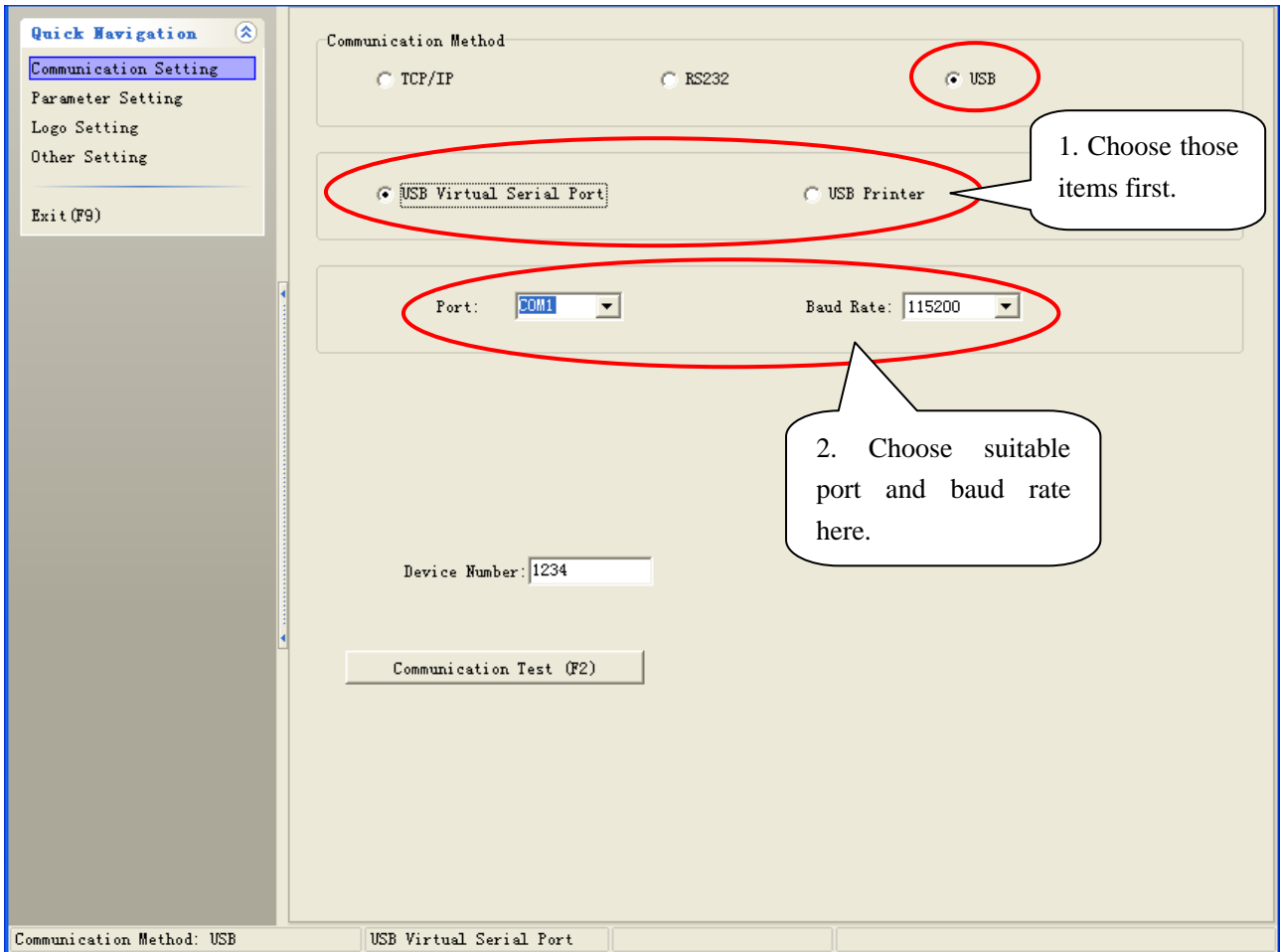


Note:

- ◆ **Port:** Select the COM-Port from the Port drop-down list according to your communication port.
- ◆ **Baud Rate:** The available baud rate for serial/blue tooth printer is 9600, 19200, 38400, 115200. The baud rate and the print density can be changed via Dip Switch, please refer to user manual. The baud rate of wireless 433/2.4G printer is fixed at 9600.
- ◆ **Communication Test (F2):** Refer to chapter 1.1 in this manual.

1.3 USB Printer

If your printer is USB printer, select **USB** as the following picture.



Note:

- ◆ When the USB printer is equipped with USB virtual serial port, select “**USB Virtual Serial Port**”. Otherwise select “**USB Printer**”.
- ◆ **Communication Test (F2):** Refer to chapter 1.1 in this manual.

2 Parameter Setting

Click “Parameter Setting” in the “Quick Navigation” menu. The window is displayed as follows:

The screenshot shows the 'Parameter Setting' window. On the left is a 'Quick Navigation' menu with options: Communication Setting, Parameter Setting (highlighted), Logo Setting, Other Setting, and Exit(F9). The main area is divided into several sections:

- Ethernet:** New IP address: 192.168.1.7, Ethernet: 100M.
- COM:** Baud Rate: 460800, Kitchen Printer Number: 1.
- Parameter:** Code Page: 0->PC437 USA, Printer Type: High Speed PP7, Language: English, Density: 0, Label Height: 210. Includes checkboxes for 'Clear Maintenance Parameter' and 'Label Printer Mode'.
- Alarm Setting:** Alarm Tvoe: Flash , Alarm, Interval Time: 50, Unit (100 msec).
- Bluetooth:** Bluetooth Nick Name: [text field].
- Wireless:** Wireless printer IP, Base Station IP, Wireless printer number.
- Communication Method Setting:** Communication Method: USB Printer.
- WIFI Machine:** Includes a 'Download parameter(F7)' button (circled in red) and a 'GOTO WIFI' button.

Callouts on the right side of the window:

- Top: 'Here you can set Ethernet &COM's information.'
- Parameter section: 'Parameter Setting'
- Alarm & Bluetooth section: 'Alarm & Bluetooth Setting'
- Wireless section: 'Wireless Setting'
- Bottom: 'Click here after finishing setting.'

At the bottom of the window, it shows 'Communication Method: USB' and 'USB Virtual Serial Port'.

Note:

◆ Ethernet

- (1) **New IP address:** input the new IP address here.
- (2) **Ethernet:** the system defaults 100M.

◆ COM

- (1) **Baud Rate:** choose the baud rate according to the actual need.
- (2) **Kitchen Printer Number:** set the kitchen printer number here.

◆ Parameter

- (1) **Code Page:** Select the codepage that to be printed.
- (2) **Printer Type:** Select the type according to your printer type.
- (3) **Language:** Select the characters that to be printed.
- (4) **Clear Maintenance Parameter:** To clear maintenance parameter.
- (5) **Density:** Used to adjust the printer density. The level can be from 1-9.

◆ Alarm Setting

- (1) **Alarm Type:** The default value is “Flash, Alarm”.
- (2) **Interval Time:** Alarm interval time.

◆ WIFI Setting

- (1) **KeyType:** The keyType chosen in this software should be matched with the key type that has been set in the wireless router. There are two types of key in this software:
Please choose ‘short key’ if the key type set in the wireless router in 64 byte;
Please choose ‘long key’ if the key type set in the wireless router in 128 byte.
- (2) **IP Address:** Printer IP address.
- (3) **Link Mode:** choose link mode
 - ‘Adhoc’: It is used to set the WIFI printer in AP mode to use one printer to connect to many PCs that have the wireless card
 - ‘Infrastructure’: It is used to connect many printers to many devices via wireless router. The device to be connected must be able to communicate with the wireless router.
- (4) **Security Type:** If “Short key” is selected, The user has to enter password to make a connection to computer. What is more, the password must be the same as the router’s password.
- (5) **Password:** Password of the wireless router
If the key type is “Short Key”, please input 5-digits password.
If the key type is “Long Key”, please input 13-digit password.
- (6) **SSID:** Name of the wireless router.

◆ Bluetooth Setting

- (1) **Bluetooth Nick Name:** Name of the Bluetooth printer.

◆ Wireless Setting

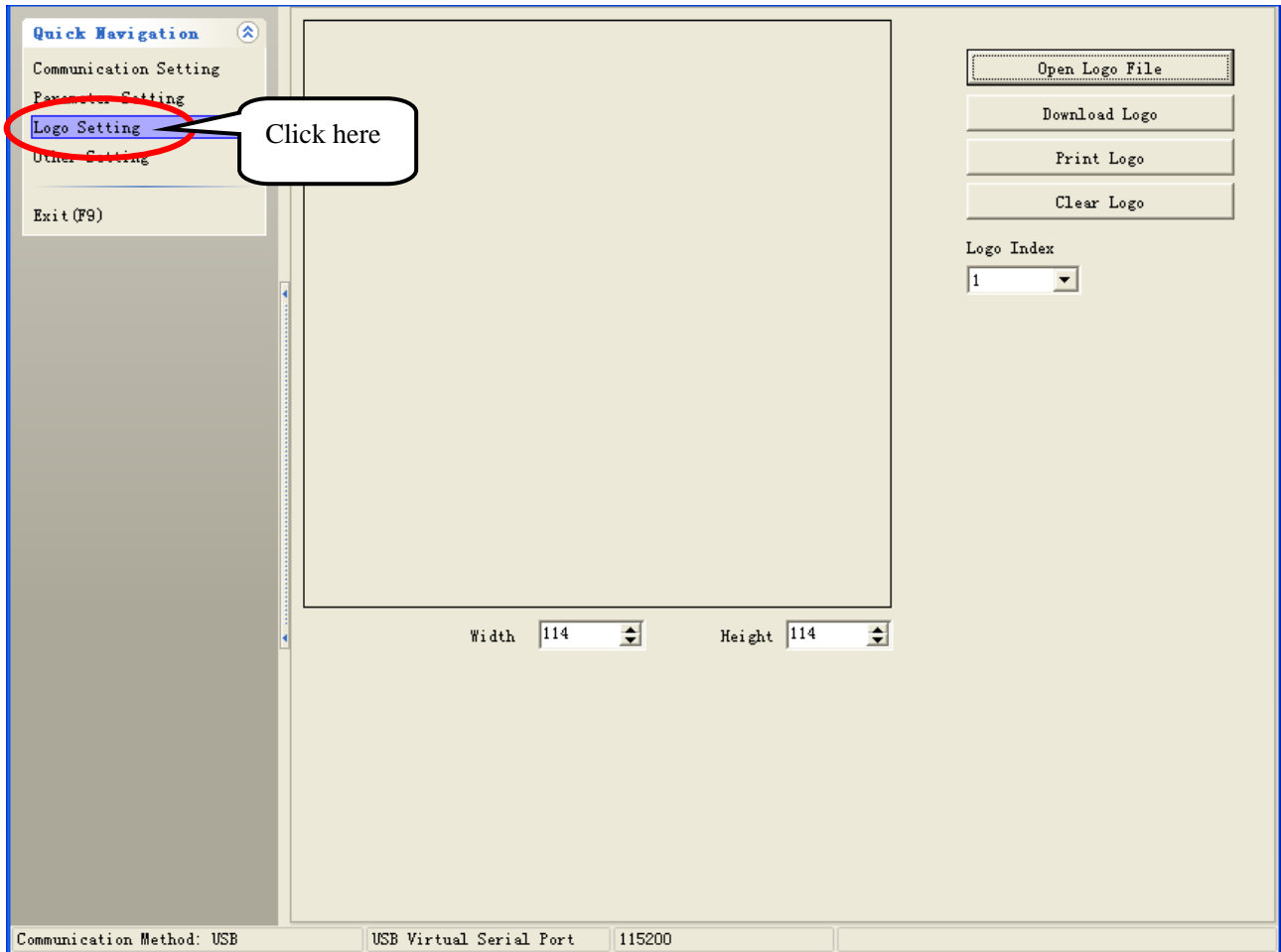
- (1) **Wireless Printer IP:** Wireless IP address of wireless 433/wireless 2.4G printer. It should be the same with Target Dongle IP.
- (2) **Base Station IP:** IP of 433 dongle. It should be the same with Local IP
- (3) **Wireless Printer Number:** Number of wireless printer.

◆ Download Parameter


- (1) After setting the parameter, Click “Download Parameter” or press key “F7” on the keyboard, and then select the file in the Parameter file folder to download parameter.
- (2) Use the connection cable (9D) to download parameters via RS232 port for Bluetooth/WIFI/wireless 433/wireless 2.4G printer.

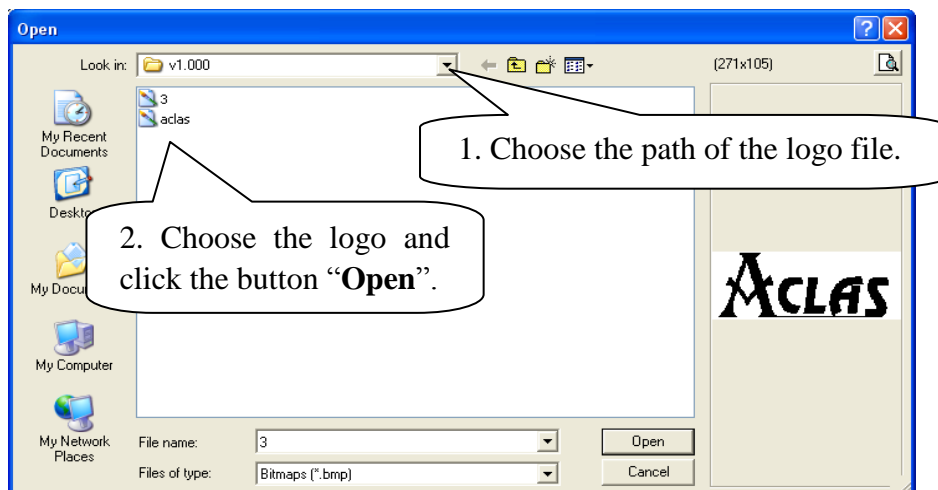
3 Logo Setting

Click “Logo Setting” in the “Quick Navigation” menu. The window is displayed as follows:

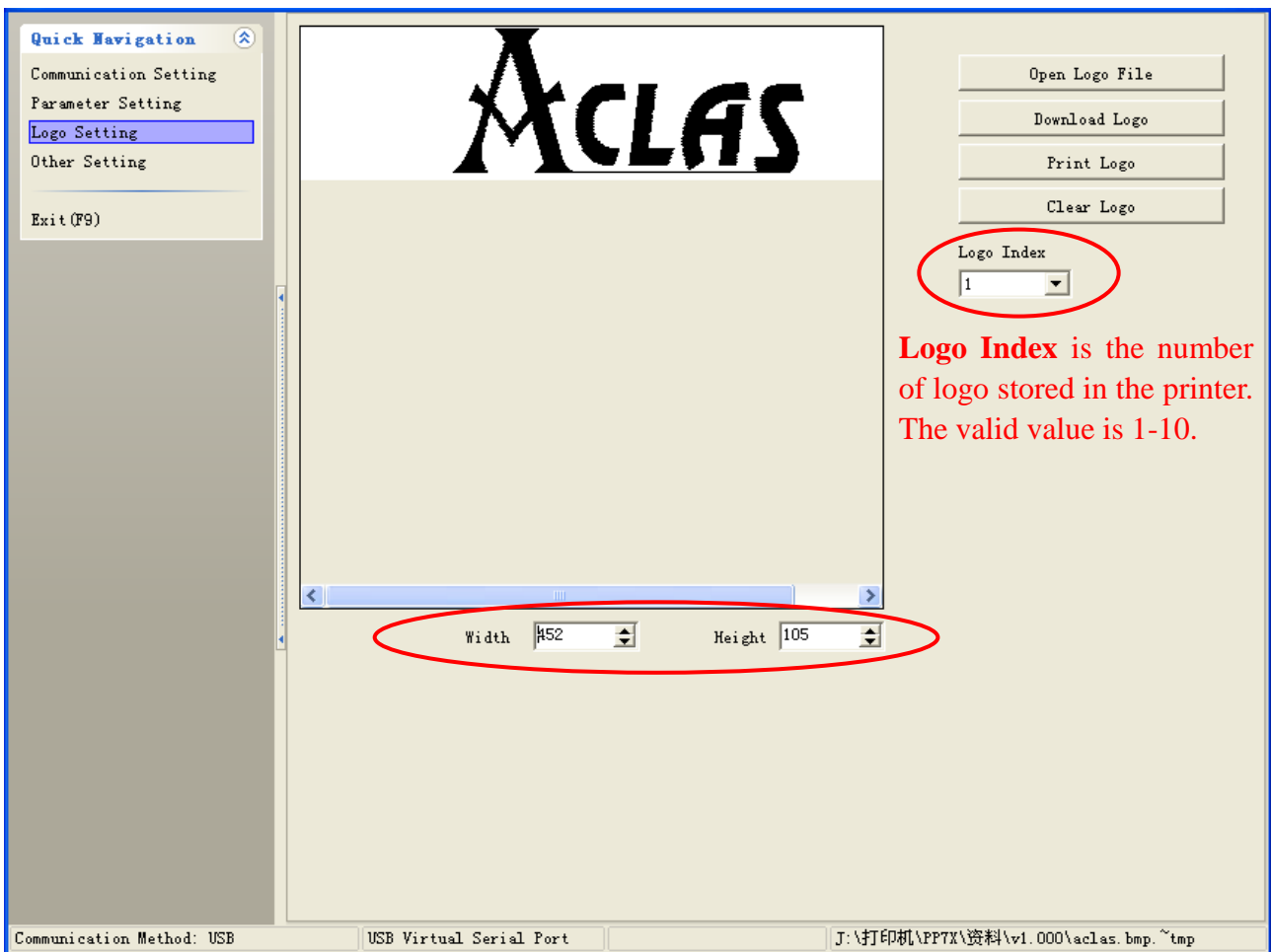


◆ Open Logo File

1. Users can click this button  to open logo file.

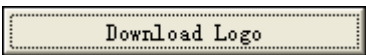


2. Logo is displayed in the window. It is width and height can be adjusted by changing their values indicated in the following picture.




Logo Index is the number of logo stored in the printer. The valid value is 1-10.


◆ Download Logo

Click  to download logo.

◆ Print Logo

Click , the logo will be printed on the thermal paper.

◆ Clear Logo

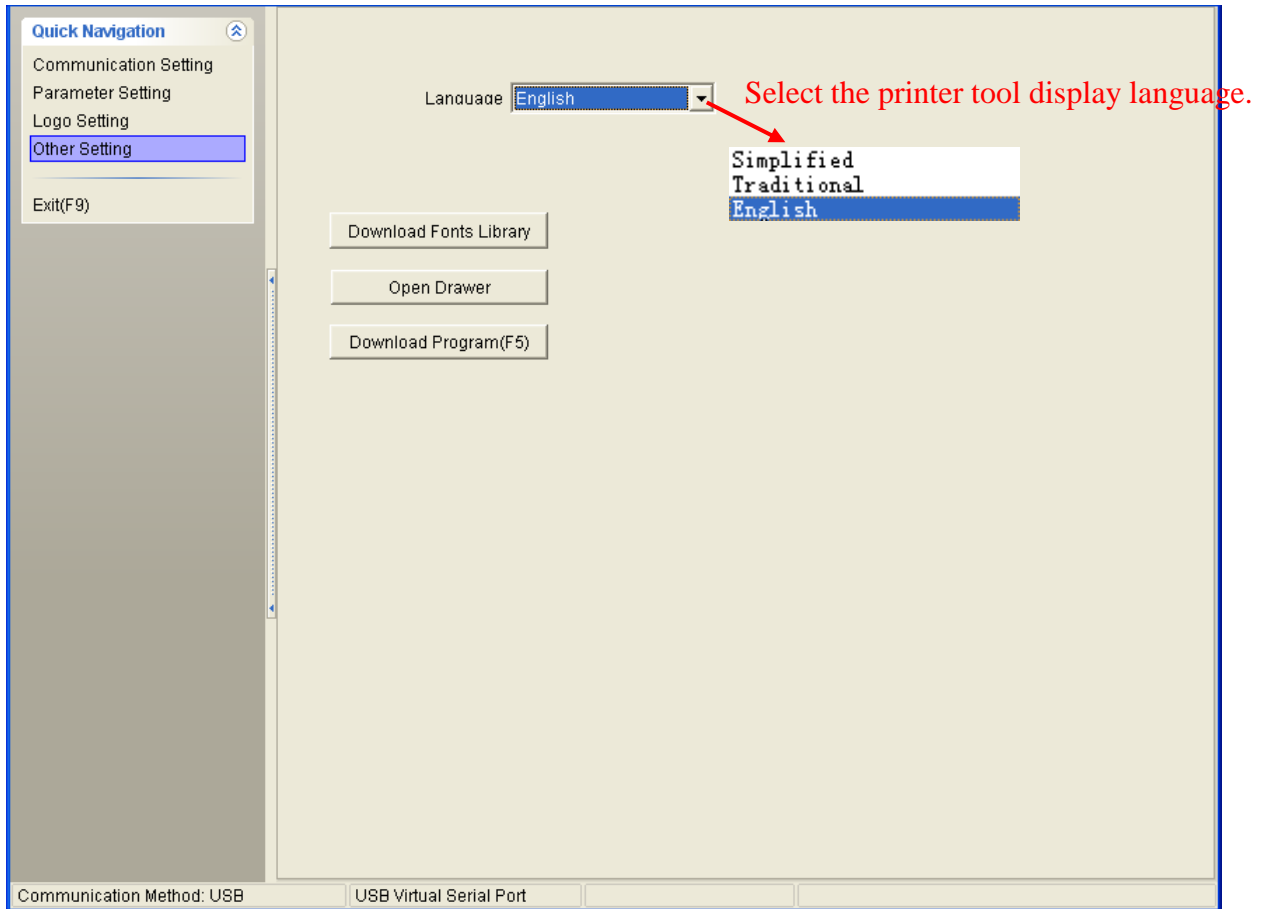
Click  to clear logo stored in the printer.

Note:

Use the connection cable (9D) to download logo via RS232 port for blue tooth/WIFI/wireless 433/wireless 2.4G printer.

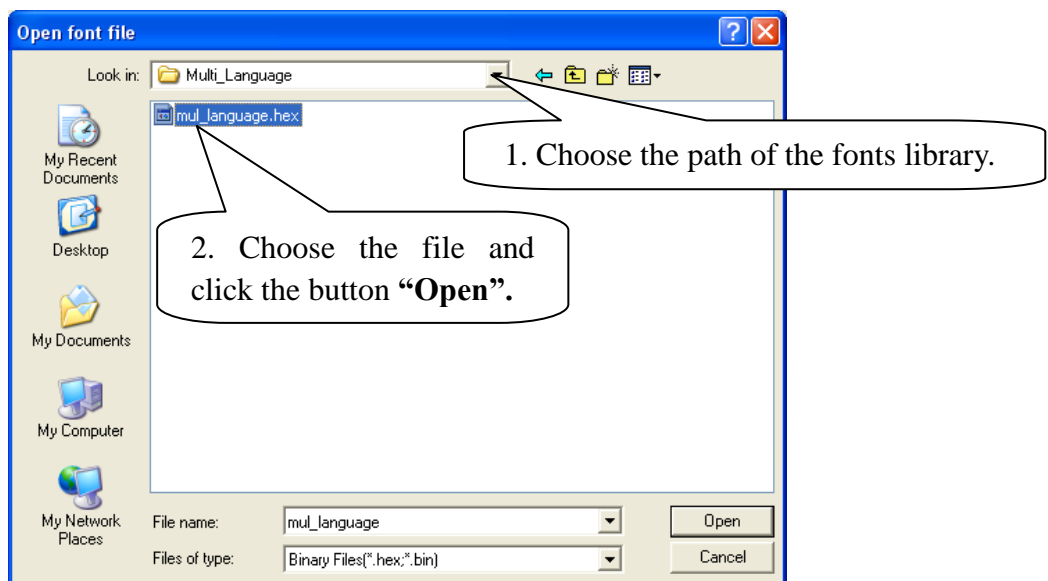
4 Other Setting

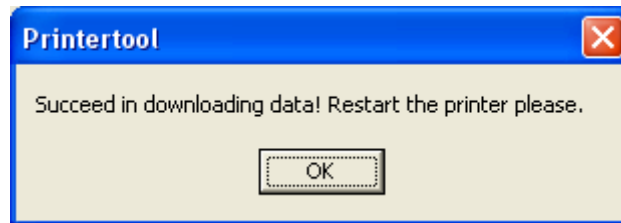
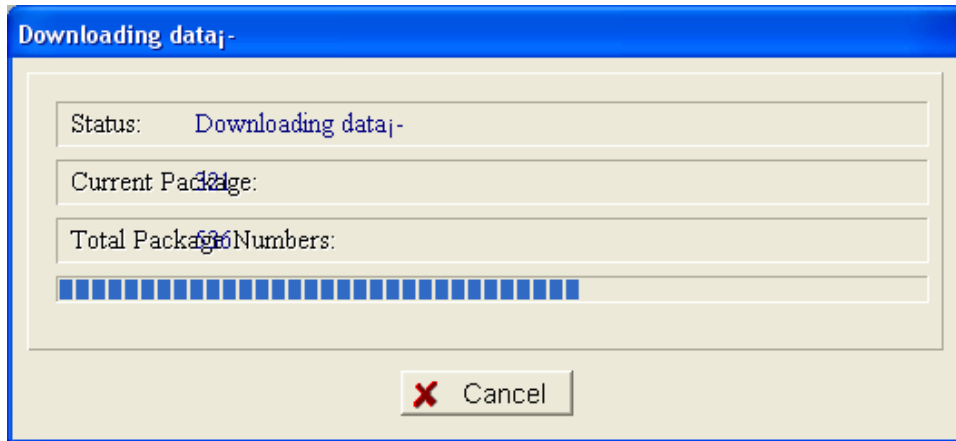
Click “**Logo Setting**” in the “**Quick Navigation**” menu. The window is displayed as follows:



◆ Download Fonts Library

Click “**Download Fonts Library**” to download fonts library according to user’s needs.



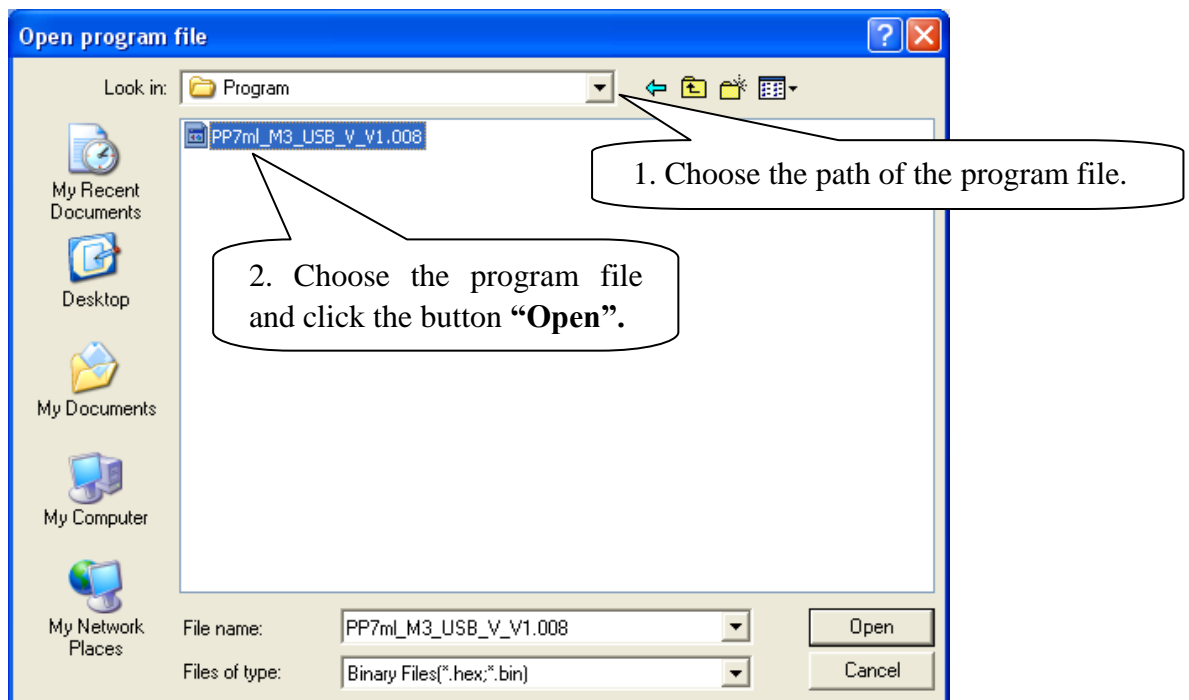


◆ Open Drawer

Click “Open Drawer” to test the drawer function.

◆ Download Program (F5)

Click “Download Program” to download program into printer.



Note:

1. If your printer is Ethernet printer or USB printer, when you first click “Download Program” button, system will prompt ”Connect...fail”, you must click the “Download Program” button again. Only in this case, will you succeed in downloading program into Ethernet/USB printer.
2. USB printer can use RS232 or USB interface to download programs.

